

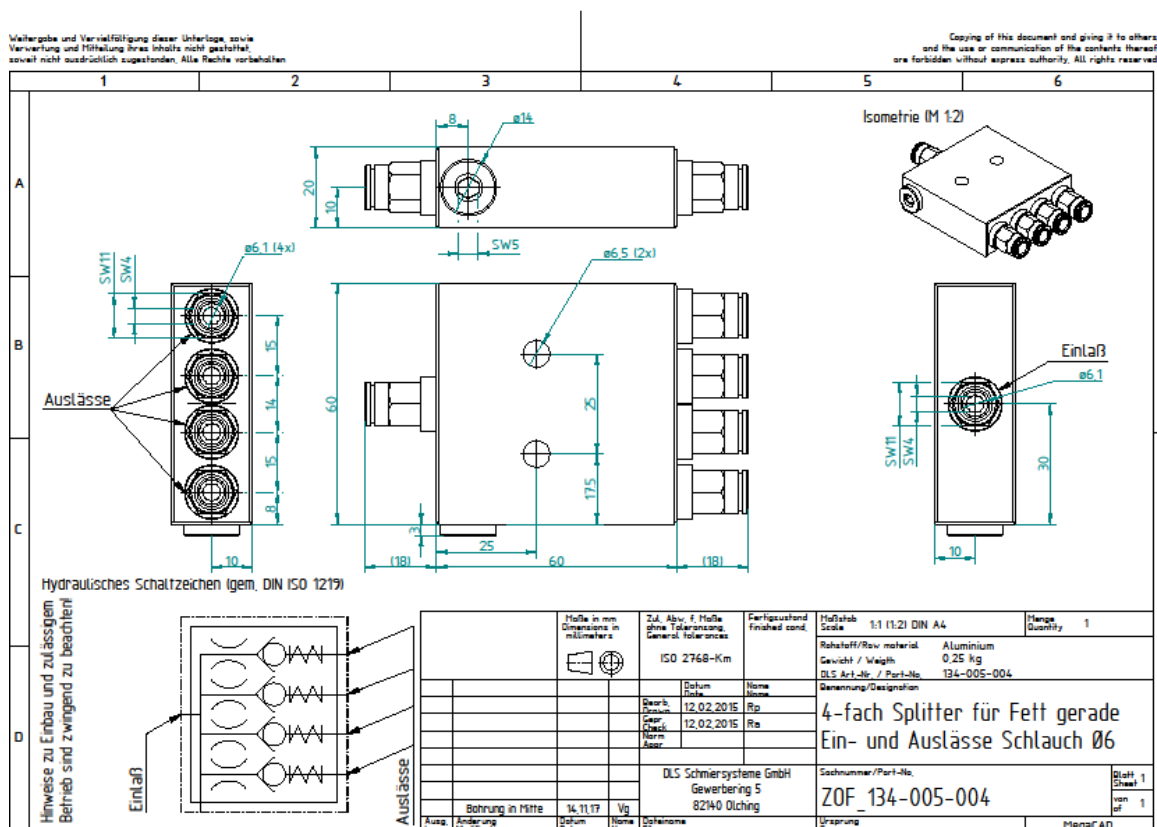
# Splitter- passiv distributor

## 1) General functionalities

The DLS SCHMIERSYSTEME Splitter work according the principle throttle principle. They will be installed between the distributor – DLS FlexxPump or manual hand press - and the lubrication points. The fluid is pumped through an inlet into antechamber. If a pressure of approx. 12 bar is reached after a successive build-up of pressure, the fluid escapes evenly into outlet bores (depending on the type of Splitter: 2, 3- or max. 4 outlets). In each outlet hole is in each case a dowel pin, which holds a gap of 1/10 mm for the fluid open. Check valves in front of each outlet prevent the backflow of fluid from the lubrication points into the splitter.

Depending on the pressure differences at the outlets, slightly different dosing quantities may occur during dispensing

## 2) Technical drawing



picture 1: 4-outlet Splitter. In this drawing with outlets 6/4 mm tube!

### 3) General conditions and restrictions

It is important to pay attention to the smallest possible differences when connecting the lubrication points with the outlets. Pressure differences between the outlets must not exceed 8 bar. Please note, connecting the outlet with tubes, the tubes should have the same length and section.

The Splitter can be used for oils and greases up to NLGI 2 and the temperature range is + 10°C - + 60°C.

### 4) Manually fill the Splitter

Please note additional to Point 3 following information:

- Maximal pressure: 110 bar
- Small dosage volume
- Slow forcing the fluid
- The inlet should be resealed after the fluid has been added
- Ensuring against ingress of foreign matter into the
- Do not install splitter in series